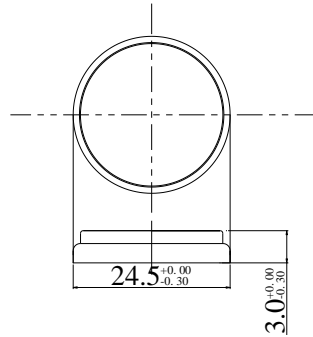


Li/MnO₂ Battery: CR2430



Technical data

- Nominal capacity: 300mAh
- Nominal voltage: 3.0V
- Standard discharge current: 0.2mA
- Max. pulse discharge current: 25mA
- Max. continuous discharge current: 6mA
- Working temperature range: -20°C ~ +70°C
- Weight: 4.5g

U.L. Component Recognition (MH28717)

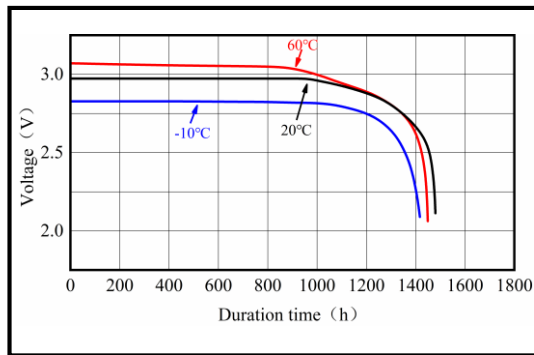
Applications

- RFID
- Memory backup
- Remote control
- Hygrometer

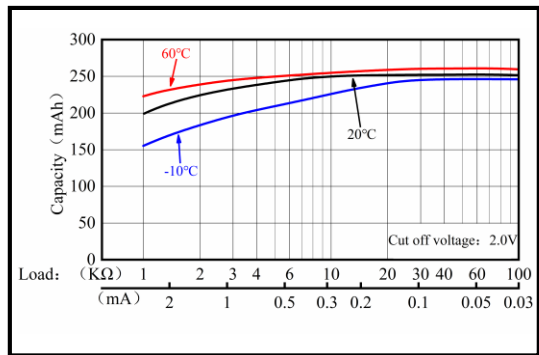
Features & Benefits

- Stable voltage
- High energy density
- Low self-discharge rate

1. Temperature Characteristics Load 15KΩ



2. Capacity VS. Load Resistance



WARNING:

Fire, explosion and severe burn hazard. Do not recharge, crush, disassemble, heat above 85°C (185°F), incinerate or expose contents to water. Do not solder directly to the cell, use tabbed cell instead.

ATTENTION:

Consult EVE when using batteries at temperature exceeding the -10°C ~ +60°C range. The above data comes from EVE's laboratory, any representations in this document concerning performance are for informational purpose only. EVE Energy Co., Ltd reserves the right to interpret this data.



Official website

Issued in Nov.2022